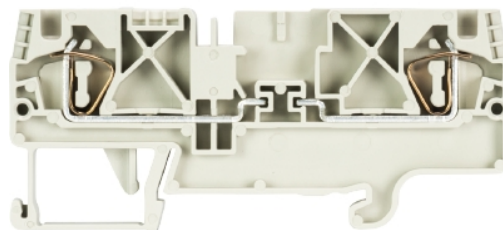


Data sheet

Commercial Art.No.: 56.704.4055.0

fuse terminal WKFN 4 TKG/35

Disconnect block with tension spring connection for mounting on TS 35, nominal cross section: 4 mm², width: 6 mm, color: grey



Commercial Art.No.	56.704.4055.0
EAN	4015573935730
Order Unit	100

certificates / approvals



Technical data

general

nominal cross section	4 mm ²
color	grey
number of levels	1
number of clamp positions per level	2
width/grid dimension	6 mm
insulating housing	PA666
flammability class of insulation material acc. with UL94	V0
mounting method	DIN rail (top hat rail) 35/7.5 mm
terminal blocks for electrical installations	no

technical data

rated voltage	500 V
rated impulse voltage	8 kV
pollution degree	3
closing plate required	yes
type of insulation material	thermoplastic
length	82.2 mm

connection data

connection type 1	spring clamp connection
connection type 2	spring clamp connection
minimum cross section solid	0.13 mm ²

maximum cross section solid	6 mm ²
minimum cross section fine stranded	0.13 mm ²
maximum cross section fine stranded	4 mm ²
wire strip length	11 mm

additional data

remark to rated current	note fuse insert
integrated test socket	no

classification

ECLASS 11	
ECLASS 8.1	27141126
ETIM 9.0	EC000902
ETIM 8.0	EC000902
ETIM 7.0	EC000902
ETIM 6.0	EC000902
ETIM 5.0	EC000902
ETIM 4.0	EC000902
ETIM 3.0	EC000902

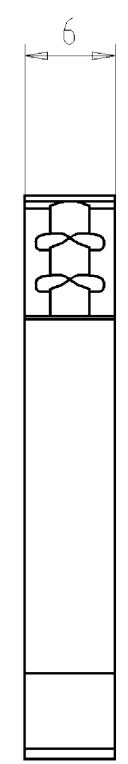
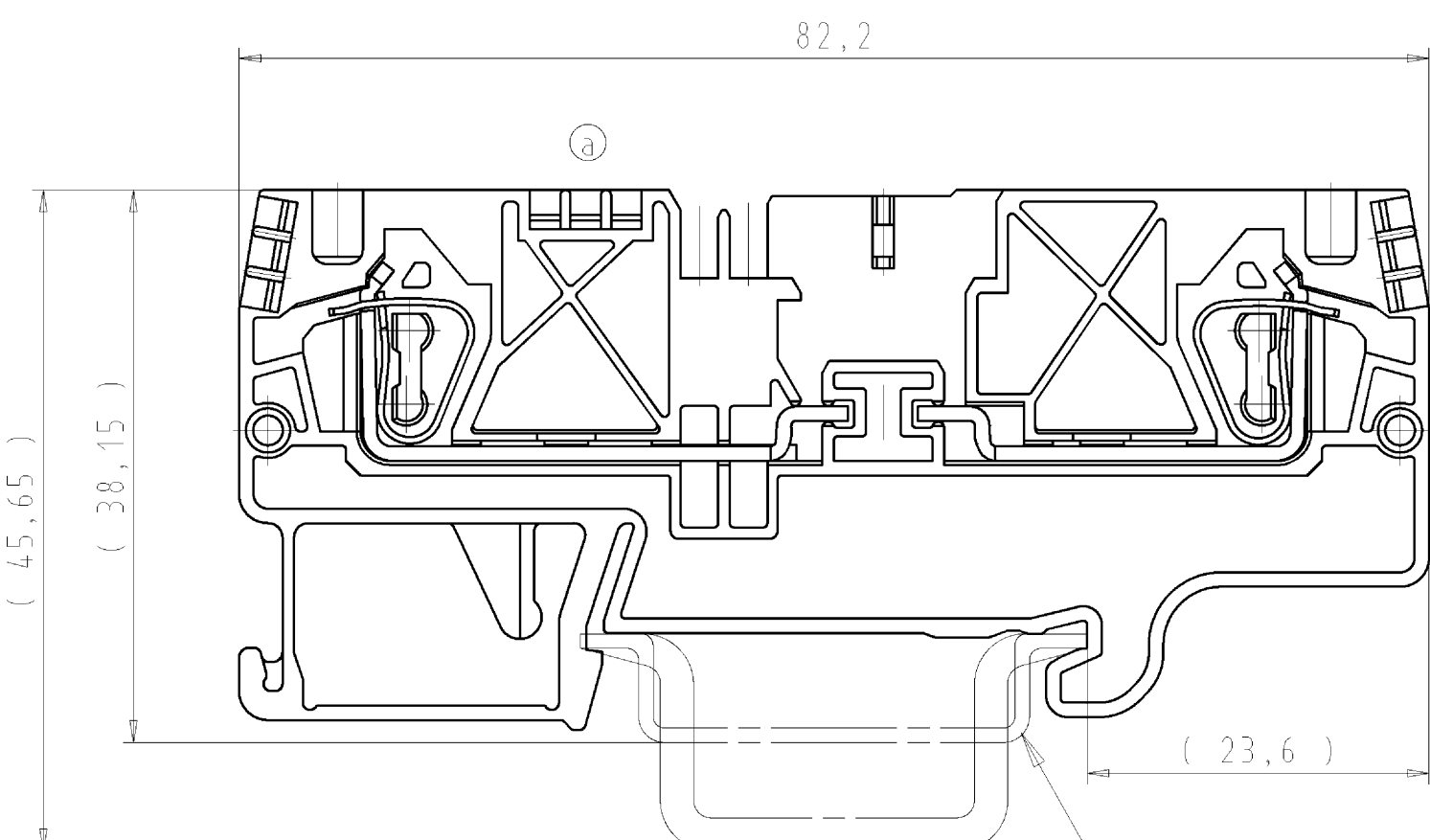
product compliance

ROHS conformity status	compliant
REACH-SVHC conformity status	compliant

Accessories

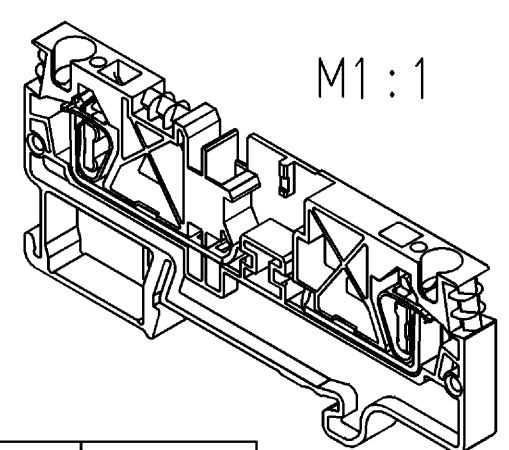
Commercial Art.No.:	Article-type description:	Description:
Z7.261.1227.0	jumper bar IVB WKF 4 - 2	Cross connector, insulated for DIN rail terminal blocks type WKF..., 2 - pole
Z7.261.1327.0	jumper bar IVB WKF 4 - 3	Cross connector, insulated for DIN rail terminal blocks type WKF..., 3 - pole
Z7.261.1427.0	jumper bar IVB WKF 4 - 4	Cross connector, insulated for DIN rail terminal blocks type WKF..., 4 - pole
Z7.261.1527.0	jumper bar IVB WKF 4 - 5	Cross connector, insulated for DIN rail terminal blocks type WKF..., 5 - pole
Z7.261.1627.0	jumper bar IVB WKF 4 - 6	Cross connector, insulated for DIN rail terminal blocks type WKF..., 6 - pole
Z7.261.1727.0	jumper bar IVB WKF 4 - 7	Cross connector, insulated for DIN rail terminal blocks type WKF..., 7 - pole
Z7.261.1827.0	jumper bar IVB WKF 4 - 8	Cross connector, insulated for DIN rail terminal blocks type WKF..., 8 - pole
Z7.261.1927.0	jumper bar IVB WKF 4 - 9	Cross connector, insulated for DIN rail terminal blocks type WKF..., 9 - pole
Z7.261.2027.0	jumper bar IVB WKF 4 - 10	Cross connector, insulated for DIN rail terminal blocks type WKF..., 10 - pole
07.312.9055.0	end plate APFN 4 D2/2	End plate for DIN rail terminal blocks type WKFN 4 D2/2..., color: grey
07.313.1655.0	intermediate plate ZP/WKFN 4 TKG	Intermediate for DIN rail terminal blocks type WKFN 4 TKG..., color: grey
04.242.6053.0	marking tag strips 9705 A / 6 / 10	Marking tag strips for DIN rail terminal blocks type 9700 A / 6..., 10 tags per strip, color: white, unmarked, markable with Wieplot plotter-system

98.300.1000.0	mounting rail TS 35x7,5 PERF 15mm - l:2000mm	Mounting rail TS 35, slotted, size 7,5 mm, length 2 m, material steel. galv. zinc-plated and passivated
---------------	--	--

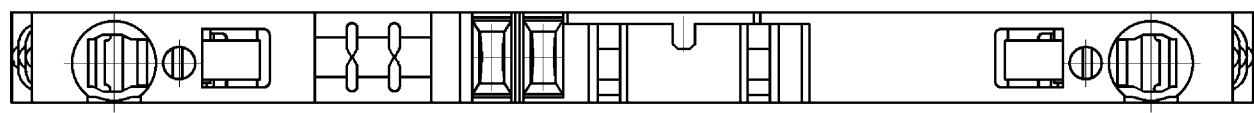


Hutschiene EN 60715-35x7,5
mounting rail EN 60715-35x7,5

Hutschiene EN 60715-35x15
mounting rail EN 60715-35x15



M1 : 1



Teile-Nr. part-no.	Typ type	Farbe colour
56.704.4055.0	WKFN 4 TKG/35	grau grey

Tolerierung nach DIN 7167/Tolerance system acc. to DIN 7167. (This DIN-standard describes the envelope principle. According to the envelope principle the deviations of form and parallelism are limited by the size tolerances).				ja/yes <input checked="" type="checkbox"/> Stoffverbots- und Deklarationsliste nach UU-TQM-05/03 ist einzuhalten. Conformity with Wieland document UU-TQM-05/03 (list of prohibited / declarable hazardous substances) to be declared!					
Freitoleranz nach DIN ISO 2768 - m General tolerance			CAD - Zeichnung, keine manuellen Änderungen CAD - drawing, no manual modifications allowed		1.Verwendung: - First Use:		Blatt: 1 von 1 Sheet: of		
			Werkstoff/Material		2007	Tag/Date	Name		
					gezeichnet drawn	27.06.	Bauer F.		
					geprüft checked	-	-		
					Normgepr. Stand. check	-	-		
		Maßstab/Scale		2:1		Zeichnung Nr./Drawing No.			
						56.704.4055.0 01K a			
						Maße in mm/Dimensions are in mm			
		Vol.		mm³	Off./Surf.	mm²	Ersatz für/Replacement for: -		
						Type		Benennung/Title	
								TRENNGRUNDKLEMME	
								fasis pro Federkraftausführung 4mm²	
								knife disconnect terminal	
Änderung/Revision		a		29.07.2011/ Datum / Blatt Date / Sheet					

Weitergabe sowie Vervielfältigung dieses Dokuments, Verwertung und Mitteilung seines Inhalts sind verboten, soweit nicht ausdrücklich gestattet.
The reproduction, distribution and utilization of this document as well as the communication of its contents to others without express authorization is prohibited.